

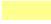





© 2024 RPS Group

Notes
1. This drawing has been prepared in accordance with the scope of RPS's appointment with its client and is subject to the terms and conditions of that appointment. RPS accepts no liability for any use of this document other than by its client and only for the purposes for which it was prepared and provided.
2. If received electronically it is the recipient's responsibility to print to correct scale. Only written dimensions should be used.

Legend

-  Order Limits
-  Zone of Theoretical Visibility - Built Elements
-  Zone of Theoretical Visibility - Panels
-  Zone of Theoretical Visibility - Panels and Built Elements

Data source	OS Terrain 5
Date sourced	2021
Coverage	Within 5km of the site.
Original cell size	5m
ZTV does not consider the effects of ground cover	ZTV calculated using panel heights of 3.5m, PCS heights of 3.5m, NG substation heights of 12.5m, main substation heights of 11m, and secondary substation heights of 6m
ZTV is not calculated beyond 5km from the site areas	Viewer height is 2m
ZTV calculation does not use mathematically approximate methods	The effects of earth curvature and light refraction are considered

Rev	Description	By	CB	Date



PHOTOVOLT
DEVELOPMENT PARTNERS



A TETRA TECH COMPANY

Client PVDP

Project Botley West Solar Farm

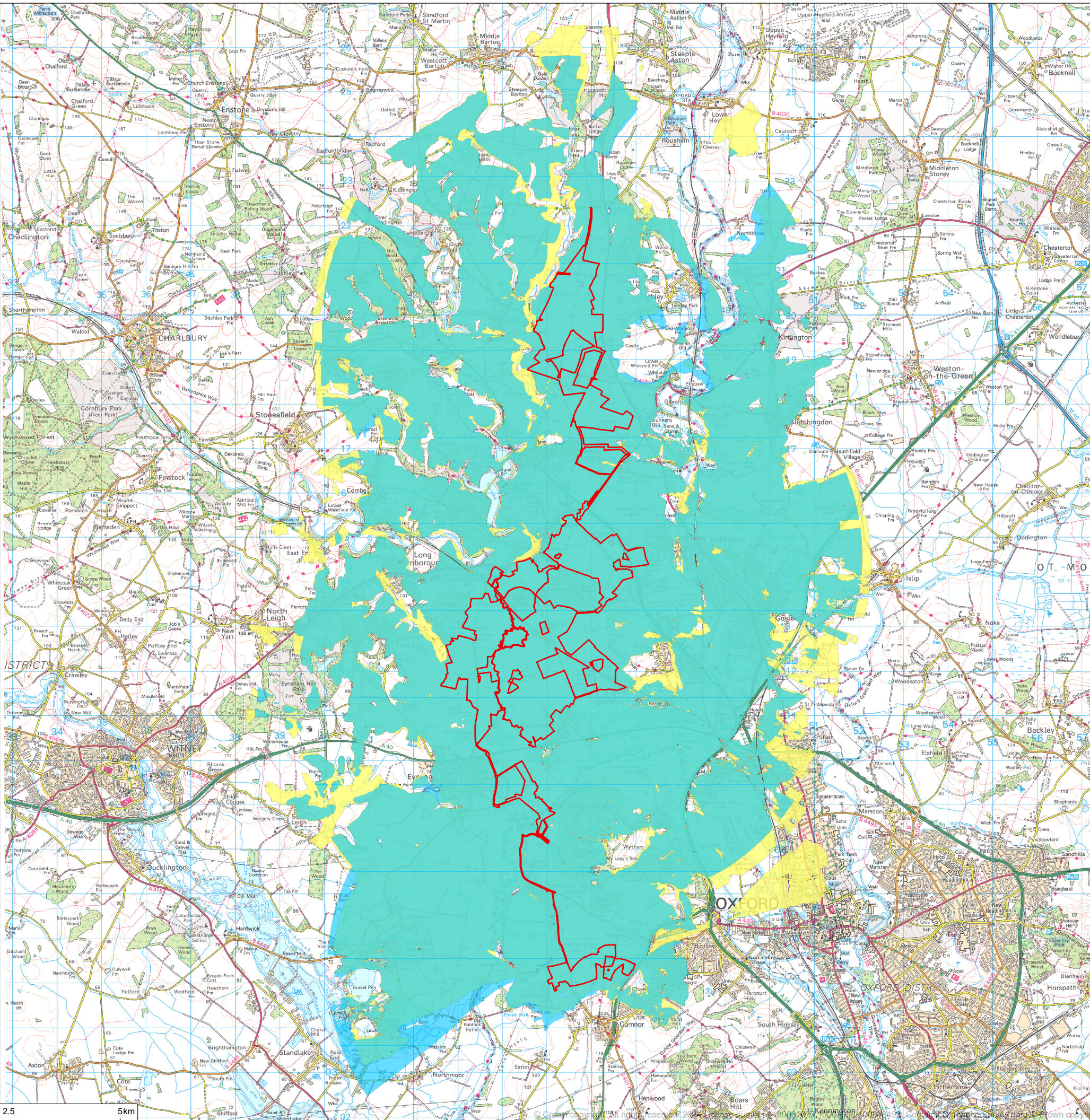
Title Bare Earth Zone of Theoretical Visibility

Status **FINAL** Drawn By JM PM/Checked By GL

Drawing Number EN010147/APP/6.4 Scale @ A3 1:90,000 Date Created NOV 2024

Figure Number **8.8a** Rev -

rpsgroup.com
20 Western Avenue, Milton Park, Abingdon, Oxfordshire, OX14 4SH
T: +44(0)1235 821 888 E: rps@rpsgroup.com



P:\eur-mpfs-02.eur.rpsgroup.com\Projects\LANDSCAPE\USL4317 Land West of Botley Solar Farm\TechDrawings\4317-0033-01.aprx

light and database right 2024.